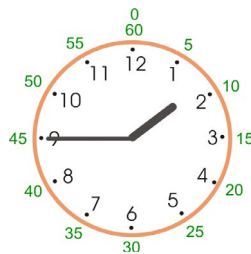


The Minutes, Part 2

Notice! The hour hand *looks like* it is pointing to 2. But the minute hand has not yet reached 60 minutes, so it is *not yet* 2 o'clock!

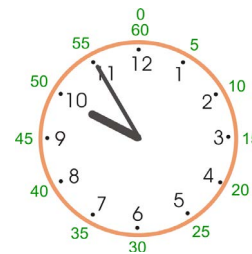


We still say it is 1 hour (and some minutes).

The minute hand is at 45.

The time is 1:45.

Another example. The hour hand *looks like* it is pointing to 10. But the minute hand has not yet reached 60 minutes, so it is *not yet* 10 o'clock.

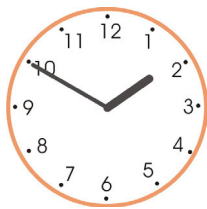


We still say it is 9 hours (and some minutes).

The minute hand is at 55.

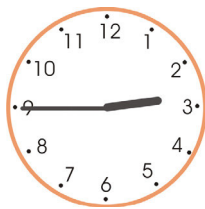
The time is 9:55.

1. Choose the correct time.



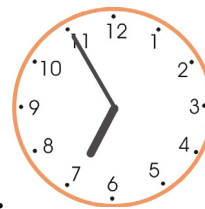
a.

Is it 1:50 or 2:50?



b.

Is it 2:45 or 3:45?



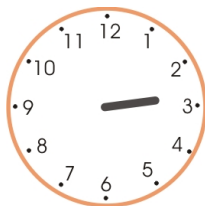
c.

Is it 6:55 or 7:55?

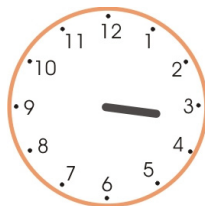
2. Draw the minute hand to match the given time. The hour hand is already drawn.



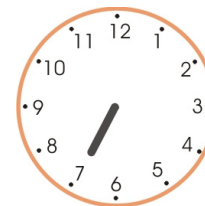
a. 1:35



b. 2:45



c. 3:15



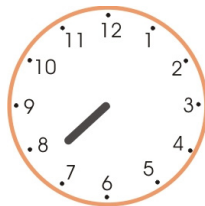
d. 6:55



e. 5:30



f. 7:40



g. 7:35



h. 12:20