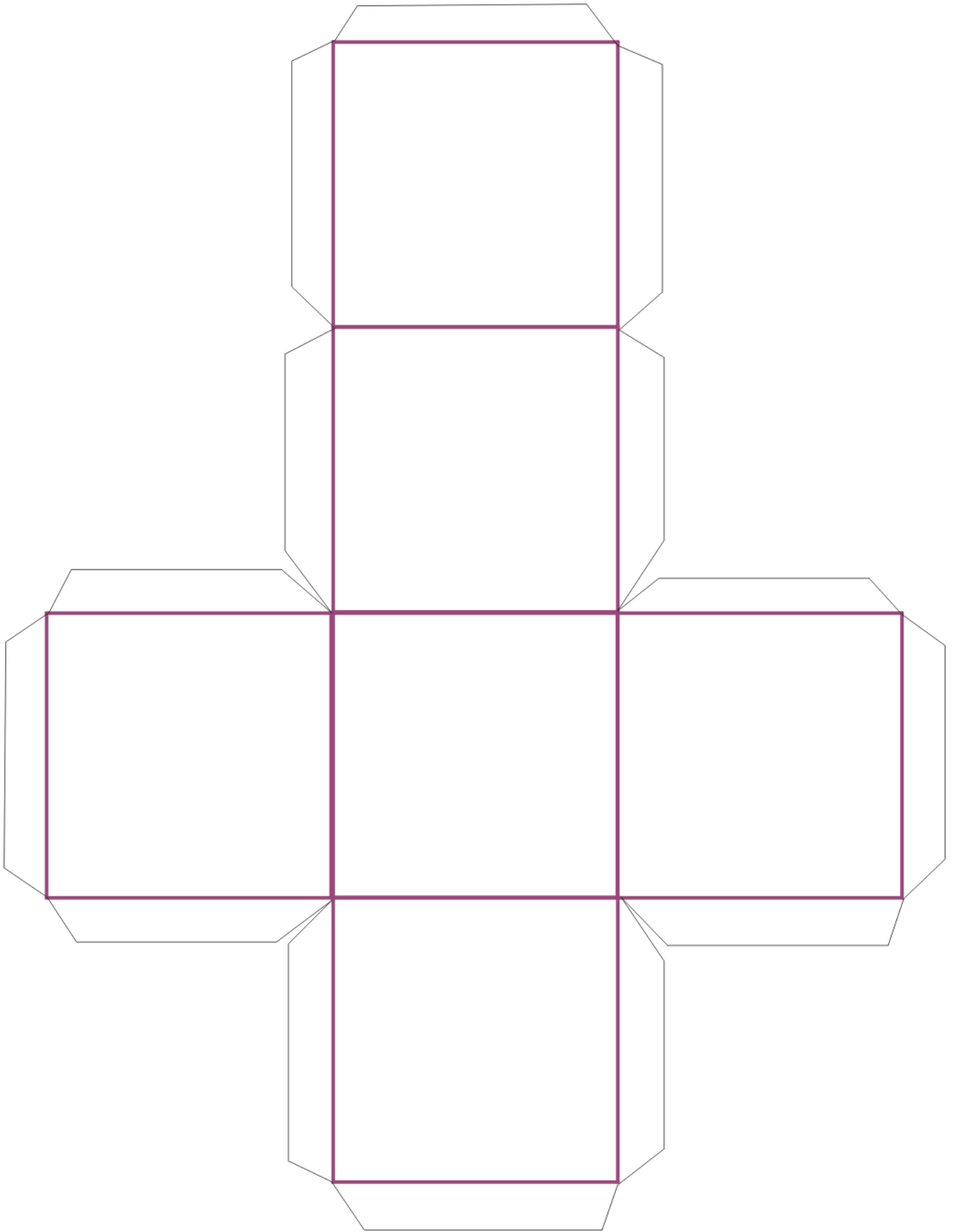
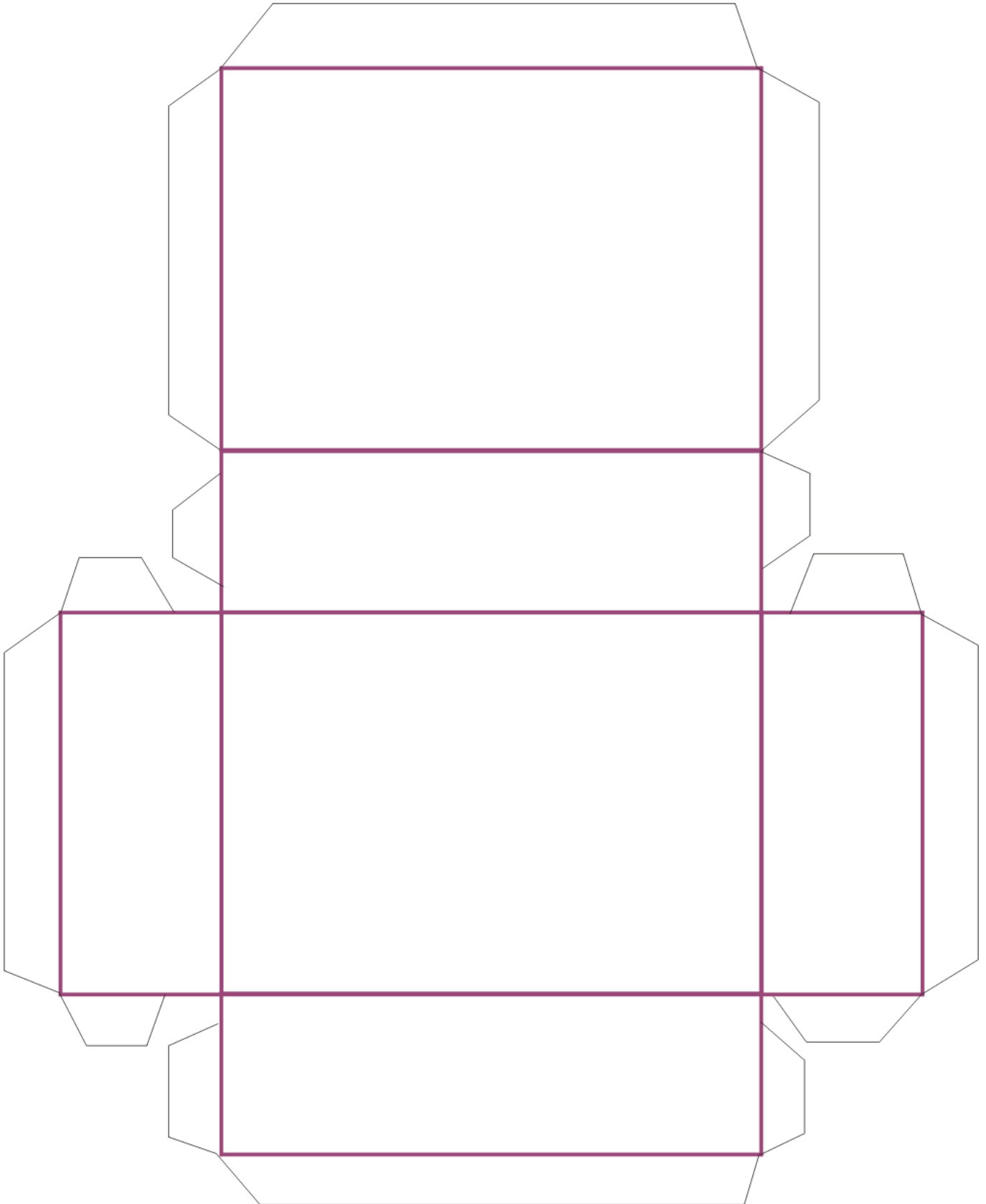


Cube

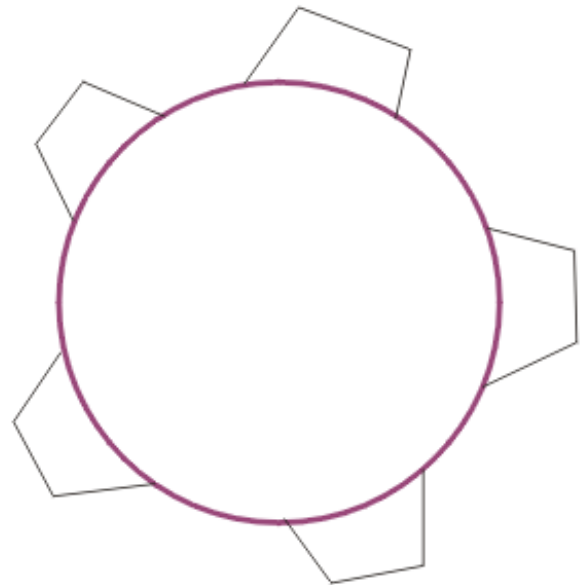
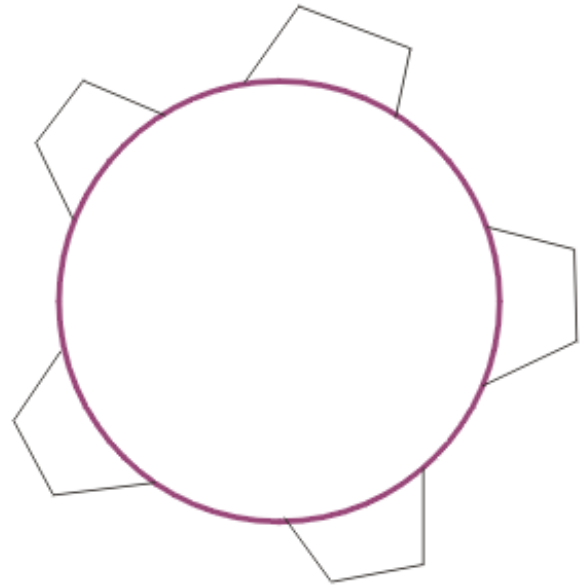


Rectangular Prism

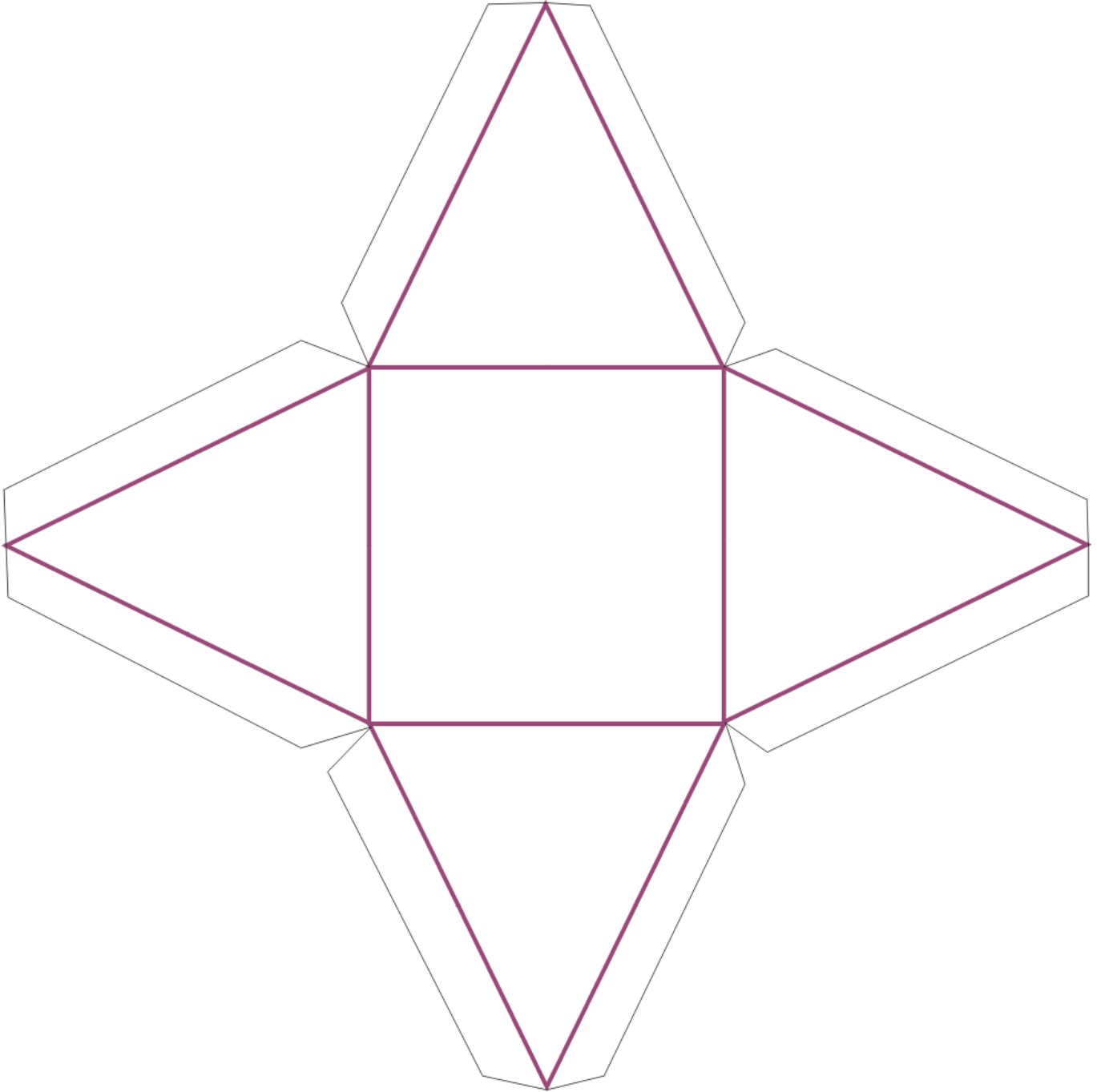


Cone

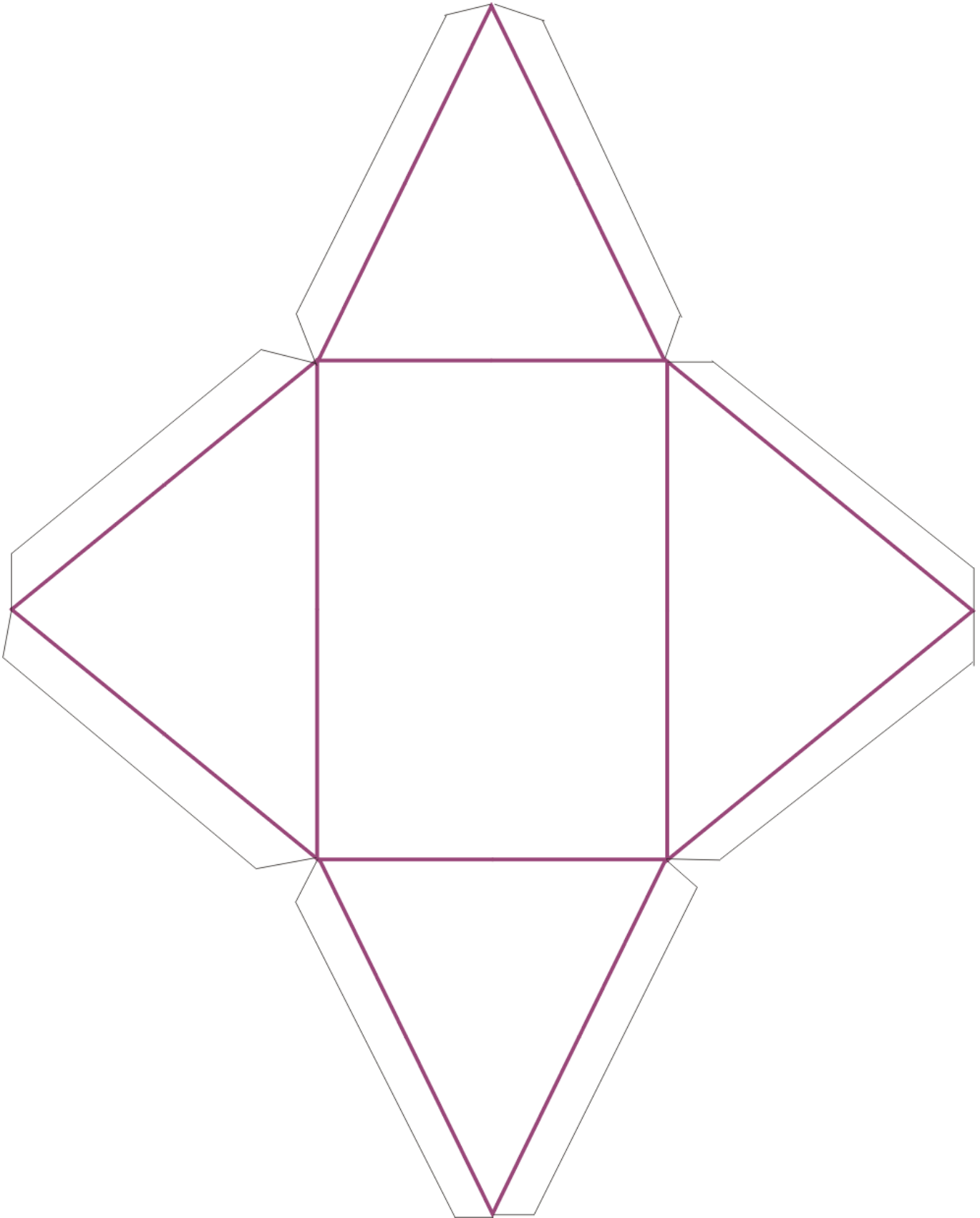
It might be easier to use a toilet paper roll as a model than to cut and glue/tape this together. But trying to put it together will help the student understand how the "body" of the cylinder is in the shape of a rectangle.



Square Pyramid

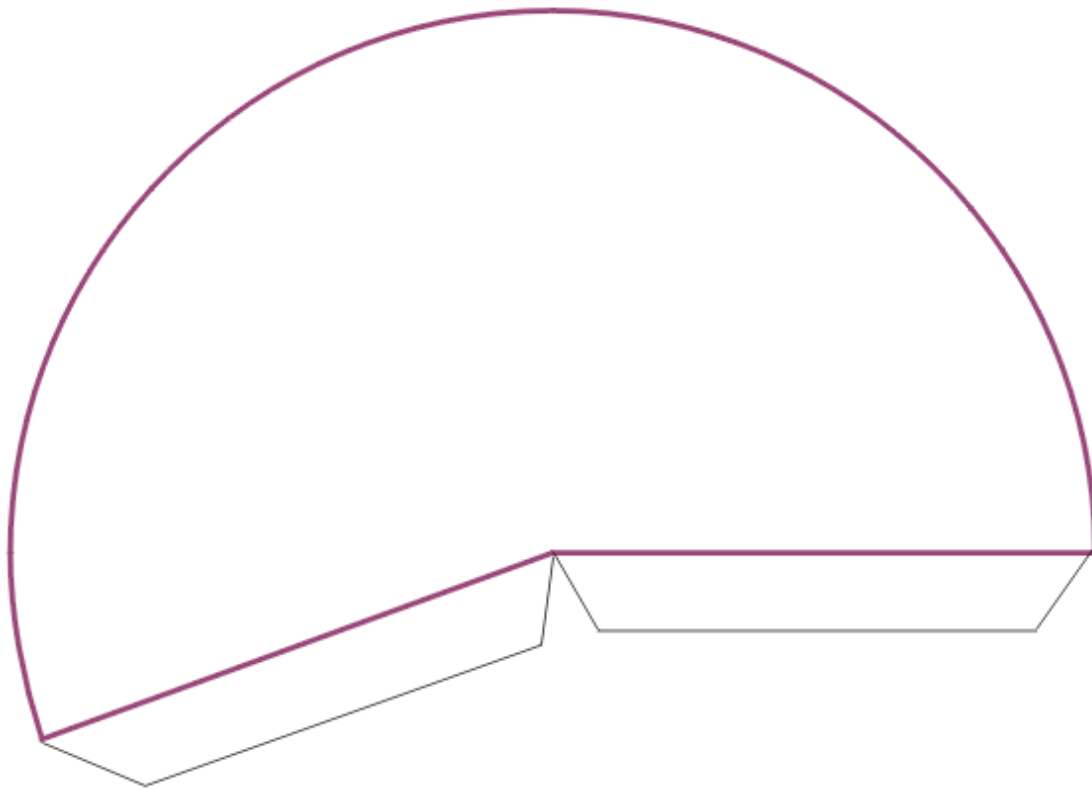
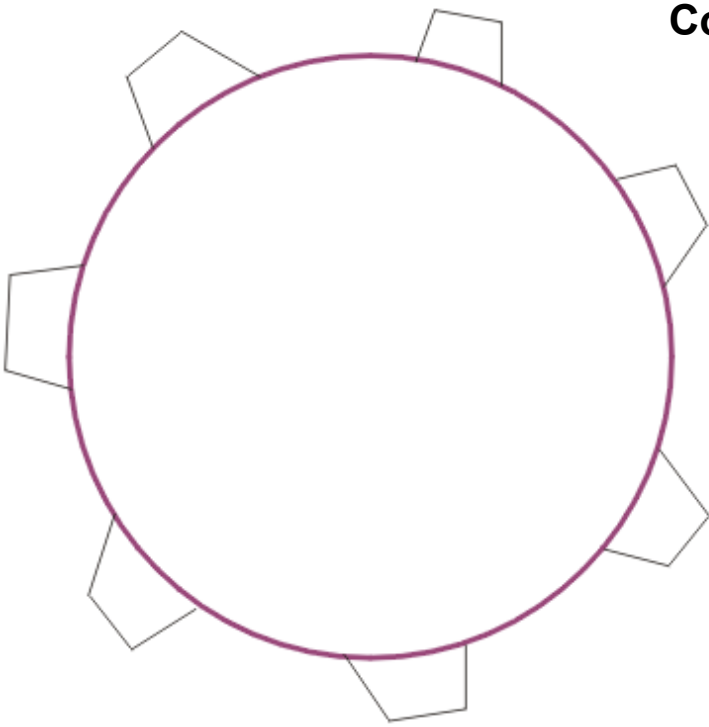


Rectangular Pyramid



Cone

A party hat is an excellent example of a cone. With this cutout, it is easy to tape or glue together the main body of the cone, but attaching the circle to the end is not easy.



**Tetrahedron
(triangular pyramid)**

