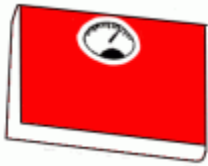


Weight in Pounds

Weight means *how heavy* something is.

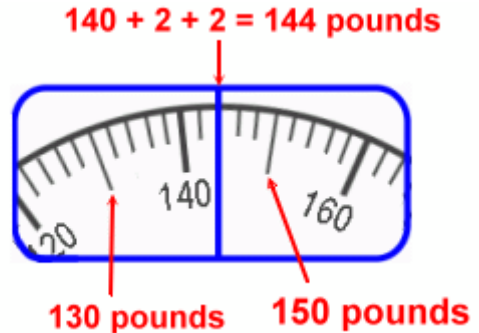
You can measure weight using scales. Bathroom scales measure weight in *pounds* or in *kilograms*.

In this lesson you will need:



- bathroom scales that measures in pounds
- a bucket and water
- encyclopedias or some other fairly heavy books
- a plastic bag or some other bag
- a backpack

The numbers on your scales may go up in twenties, and not in tens. In the picture here, the longer line halfway in-between the two numbers is ten more than the smaller of the two numbers. Each little line means a 2-pound increment. The scales are stopped at the second little line after 140 pounds, which means $140 + 2 + 2$ pounds, or 144 pounds.

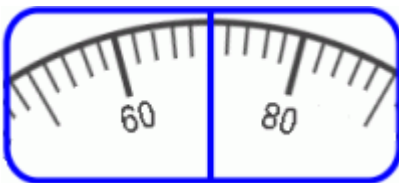


We use "lb" to abbreviate the word pounds.

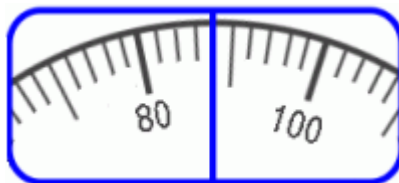
15 pounds = 15 lb.

The "lb" comes from the Latin word *libra*, which also means a pound.

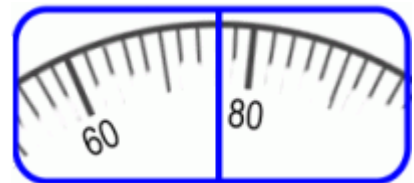
1. How many pounds are the scales showing? You can mark the in-between ten-numbers on the scale to help.



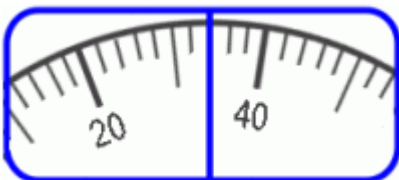
a.



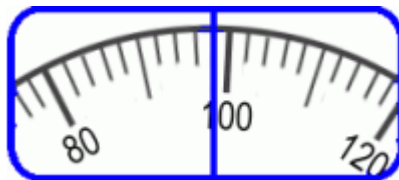
b.



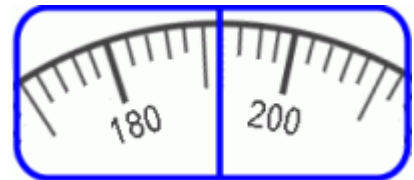
c.



d.



e.



f.