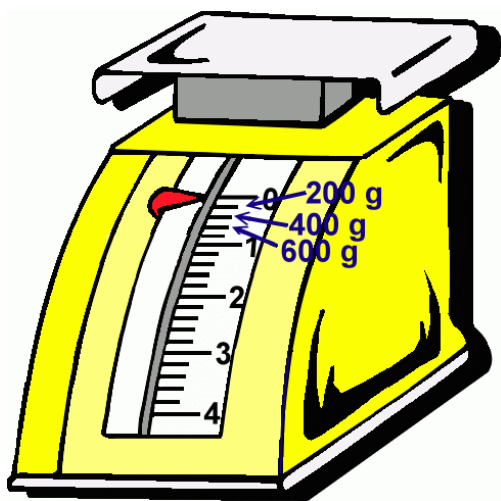


Using Grams



This scale measures in *grams*. Grams are used when you measure the weight of small items such as letters. A *gram* is a very small unit of weight - about 30 times smaller than an ounce.

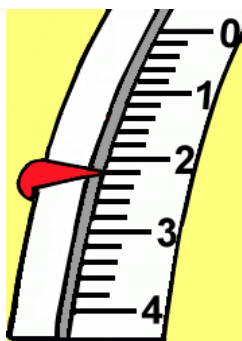
A gram is abbreviated with “g”. A thousand grams make one *kilogram* (1 kg).

Grams and kilograms are used all around the world, whereas pounds and ounces are not.

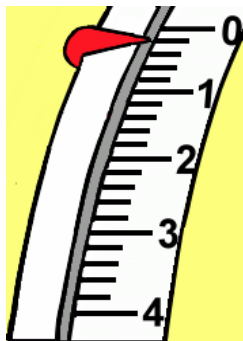
The numbers 0, 1, 2, 3, and 4 on this scale refer to whole kilograms. In between each two numbers there are four little lines.

They divide each kilogram into five parts so each line marks a 200-gram increment.
(200 g + 200 g + 200 g + 200 g + 200 g = 1000 g = 1 kg.)

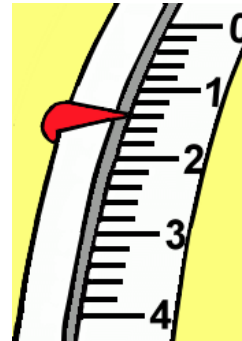
1. Write the amount of kilograms and grams the scales are showing.



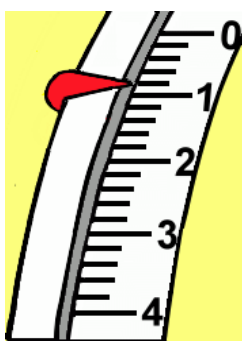
a. 2 kg 200 g



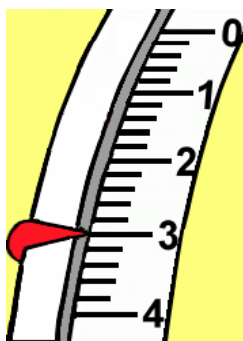
b. ___ kg ___ g



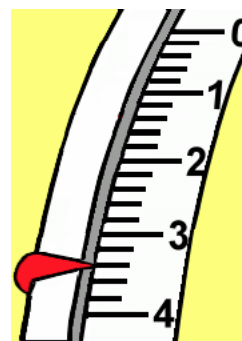
c. ___ kg ___ g



d. ___ kg ___ g



e. ___ kg ___ g



f. ___ kg ___ g